



摆轮分拣机

SWIVEL WHEEL SORTER

大件重件分拣利器

打破异形大件人工分拣限制

Product Overview

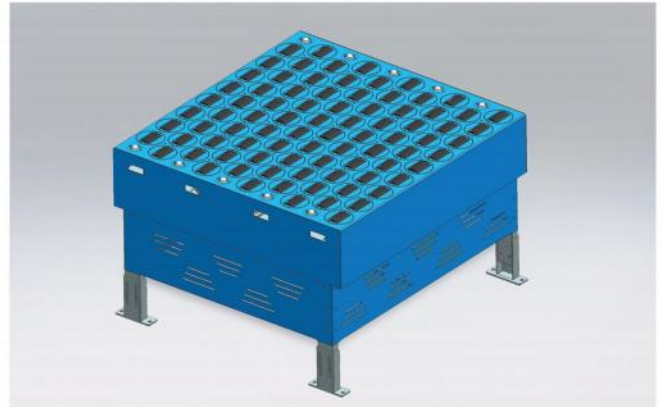
产品概述 >>>>

摆轮分拣机

Swing Wheel Sorting Machine

摆轮分拣机 RKSORT-SWS (也称为偏转轮分拣机、可旋转轮分拣机), 为包裹和纸箱的输送分拣提供可靠的解决方案。

The Swivel Wheel Sorter RKSORT-SWS (also known as the deflection wheel sorting machine or the rotatable wheel sorting machine) provides a reliable solution for the transportation and sorting of packages and cartons.



摆轮分拣机由电动滚筒 (轮子)、转向装置、控制系统以及机架等组成, 通过电动滚筒的旋转实现物品的传输, 通过伺服电机及转向模块改变电动滚筒的左右方向和角度来实现物品的分流。

The Swivel Wheel Sorter is composed of an electric drum (wheel), a steering device, a control system, and a frame. The transmission of items is achieved through the rotation of the electric drum, and the left and right directions and angles of the electric drum are changed through servo motors and steering modules to achieve the separation of items.

摆轮分拣机可以对 50kg 以下的纸箱、防水袋、编织袋等各种包装, 以及部分为外形不规则但底部较为平整的非标包装物品, 以 2m/s 的速度传输、6000 件 / 小时的速度进行高速分拣, 产品广泛用于邮政、快递、电商物流和配送中心等场合。

The Swivel Wheel Sorter can transport various types of packaging such as cardboard boxes, waterproof bags, woven bags, etc. weighing less than 50kg, as well as non-standard packaging items with irregular shapes but relatively flat bottoms, at a speed of 2m/s and 6000 pieces/hour for high-speed sorting. The products are widely used in postal, express, e-commerce logistics, distribution centers, and other occasions.

Equipment Characteristics

设备特点

>>>> • 适用性强 Strong applicability

摆轮分拣机由若干个较小的电动滚筒组成的相对平整的表面，滚筒表面包胶与物品底部大面积柔性接触，输送分拣的过程平稳，高效，特别适合各类包裹、服装、图书、箱、盒、部分软包的输送分拣。

The Swivel Wheel Sorter is composed of several smaller electric rollers, which form a relatively flat surface. The surface of the rollers is coated with glue and has a large area of flexible contact with the bottom of the items. The conveying and sorting process is smooth and efficient, especially suitable for conveying and sorting various types of packages, clothing, books, boxes, and some soft bags.

>>>> • 高效分拣 Efficient sorting

摆轮分拣机采用电动滚筒作为主要输送介质。电动滚筒具备负载大、低噪音、速度快、传动平稳等优势，与传统结构相比去除了复杂的传动机构，使用过程更高效，分拣效率可达 6000 件 / 小时。

The Swivel Wheel Sorter uses electric drums as the main conveying medium. Electric drum has advantages such as large load, low noise, fast speed, and smooth transmission. Compared with traditional structures, it eliminates complex transmission mechanisms and is more efficient in use. The sorting efficiency can reach 6000 pieces per hour.

>>>> • 结构紧凑 Compact Structure

摆轮分拣机设计简单、结构稳定、故障率低。分拣转向机构之间通过关节轴承连接，转向角度可以根据实际使用情况进行微调。转向动力来自伺服电机，响应迅速，结构紧凑，分拣平稳。每台摆轮机包含多组转向模块，彼此独立控制，只需接收分拣信号即可实现分拣动作。

The design of the Swivel Wheel Sorter is simple, the structure is stable, and the failure rate is low. The sorting and turning mechanisms are connected by joint bearings, and the turning angle can be adjusted according to actual usage. The steering power comes from the servo motor, which responds quickly, has a compact structure, and smooth sorting. Each swing machine includes multiple sets of steering modules, which are independently controlled by each other. Sorting actions can be achieved by simply receiving sorting signals.

• 快速装卸 Highly flexible

摆轮分拣机的单组摆轮、单排模组均采用标准化、模块化设计。输送单元为独立模块，与传动元件可轻松拆卸分离，实现便捷快速的拆装维护。

The single set of swing wheels and single row modules of the swing wheel sorting machine adopt standardized and modular design. The conveying unit is an independent module that can be easily disassembled and separated from the transmission components, achieving convenient and fast disassembly and maintenance.

设备型号 Equipment model	SWS-10M	SWS-12H
分拣物品 Sorting items	中大型包裹、编织袋、柔性包裹等	
重量范围 Weight range	0.2kg≤M≤50kg	0.2kg≤M≤50kg
包裹尺寸范围 (最大包裹以 1 米宽设备为例)	MAX:1000*1000*700mm MIN:150*150*30mm	
分拣能力 Sorting capacity	4000p/h	6000p/h
分拣准确率 Sorting accuracy	99%	
分拣模式 Sorting mode	单边分拣 / 双边分拣	
电动滚筒尺寸 Electric drum size	筒长 85mm* 筒直径 70mm	
输送速度 Conveying speed	1-1.5m/s	1.2-2m/s
摆动机构数量 Number of swinging mechanisms	不小于 2	不小于 5
包裹间距 Package spacing	800mm	400mm
运行噪音 Operating noise	≤72dB (A)	

Product Application

产品应用 >>>>

1

摆轮分拣机输送分拣过程平稳、效率高，特别适合各类包裹、服装、图书、箱、盒、部分软包的输送分拣。

The Swivel Wheel Sorter has a smooth and efficient conveying and sorting process, especially suitable for conveying and sorting various types of packages, clothing, books, boxes, boxes, and some soft bags.



2

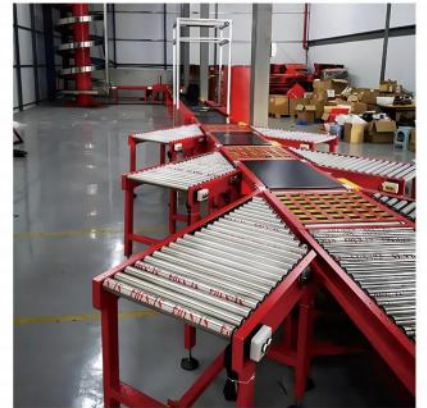
摆轮分拣设备广泛应用于包括快递、物流中心、仓库等各种物流场景中。在这些场景中，摆轮分拣设备可以快速、精准地完成快递包裹、货物等的分拣工作。

Rotary sorting equipment is widely used in various logistics scenarios, including express delivery, logistics centers, warehouses, etc. In these scenarios, the rotary sorting equipment can quickly and accurately complete the sorting work of express packages, goods, etc.

3

在电商仓储中心，摆轮分拣设备可以帮助企业快速、高效地处理大量的订单和包裹，摆轮分拣设备也得到了广泛的应用。

In e-commerce warehousing centers, cycloidal sorting equipment can help enterprises quickly and efficiently process large numbers of orders and packages, and cycloidal sorting equipment has also been widely used.



4

在制造业生产线上，摆轮分拣机可以帮助企业高效地处理原材料、零部件等物料，并将其分类存储。摆轮分拣机已在医疗、食品，新能源等领域得到广泛应用。

On manufacturing production lines, Swivel Wheel Sorter can help enterprises efficiently process raw materials, components, and other materials, and classify and store them. The Swivel Wheel Sorter has been widely used in medical, food, new energy and other fields.

Product Advantages

产品优势 >>>>

• 技术先进 >>>>

Modern techniques



锐尔凯摆轮分拣机的控制系统配合传感器，根据包件到达情况控制设备的启停运转，高效节能。伺服驱动控制分拣转向，响应速度快，转向角度精确可控。根据实际的应用场景可实现单向、双向、多角度分拣，多种分拣模式满足用户的实际要求。

The control system of the Realkey Swivel Wheel Sorter, in conjunction with sensors, controls the start, stop, and operation of the equipment based on the arrival of packages, achieving high efficiency and energy conservation. Servo drive controls sorting and turning, with fast response speed and precise and controllable turning angle. According to actual application scenarios, one-way, two-way, and multi angle sorting can be achieved, and multiple sorting modes can meet the actual requirements of users.

• 精密制造 >>>>

Precision manufacturing



零部件采用 CNC 精密加工，设备经精心组装调试而成，精湛的工艺和严格的品控使得设备精度高、寿命长、噪音低、维护成本低。

The components are processed with CNC precision, and the equipment is carefully assembled and debugged. Exquisite craftsmanship and strict quality control make the equipment highly precise, long-lasting, low-noise, and low maintenance costs.

• 安全稳定 >>>>

Safe and stable



锐尔凯摆轮分拣机坚实耐用，可靠性高、稳定性达到国内先进水平。设备的各个运转部位均做好周到细致的防护，精心的安全防护设计消除了操作者的担忧。

The Realkey Swivel Wheel Sorter is solid and durable, with high reliability and stability reaching the advanced level in China. All operating parts of the equipment are carefully protected, and the meticulous safety protection design eliminates the operator's concerns.

• 可靠性 >>>>

Reliability



锐尔凯在物流运输和自动分拣领域拥有 17 年的经验，在帮助客户制定分拣解决方案方面具有独特的优势，产品以扎实耐用而著称。我们是您可以信赖的合作伙伴。

Realkey has 17 years of experience in logistics conveying and automatic sorting, and has a unique advantage in helping customers develop sorting solutions. Its products are known for their solid and durable nature. We are your trusted partner.

About Realkey

关于锐尔凯 >>>>

青岛锐尔凯机械有限公司专业从事自动化输送与分拣设备的研发与制造。

Qingdao Realkey Machinery Co., Ltd. specializes in the research and manufacturing of automated conveying and sorting equipment.

公司成立于 2007 年，坐落于青岛市莱西姜山镇昌平路 111 号，占地面积超过 20000 平方米，厂房面积 12000 平方米。公司通过了 ISO9001 质量管理体系认证、ISO14001 环境管理体系认证、知识产权管理体系认证，获得国家“高新技术企业”、青岛市“专精特新”企业、青岛市“科技型中小企业”、“青岛市小型快递包裹智能分拣技术创新中心”等称号。公司已成功申报并获得自主研发的发明与实用新型专利 20 余项。

Realkey was established in 2007 and located at 111 Changping Road, Jiangshan Town, Laixi, Qingdao. It covers an area of over 20000 square meters and has a factory area of 12000 square meters. The company has passed ISO9001 quality management system certification, ISO14001 environmental management system certification, and intellectual property management system certification, and has been awarded titles such as National "High tech Enterprise", Qingdao "Specialized, Refined, Unique and New" Enterprise, Qingdao "Science and Technology oriented Small and Medium sized Enterprise", and "Jidao Small Express Parcel Intelligent Sorting Technology Innovation Center". The company has successfully applied for and obtained more than 20 independently developed invention and utility model patents.

锐尔凯秉持优质、高效、服务、创新的企业精神，致力于高品质、低成本、短交期的实现，为物流企业与制造业工厂提供优质、高效、稳定的物流系统解决方案。

Realkey upholds the corporate spirit of quality, efficiency, service, and innovation, committed to achieving high quality, low cost, and short delivery time, providing high-quality, efficient, and stable logistics system solutions for logistics enterprises and manufacturing factories.

17 年

17 年研发生产经验

12000 平方

拥有 12000 m² 生产车间

50 名

50 名研发人员

200+

200 多个自动分拣项目案例



Partner and Honorary Certificates

合作伙伴及荣誉证书 >>>>



Contact Us

联系我们 >>>>>

青岛锐尔凯机械有限公司

QINGDAO REALKEY MACHINERY CO.,LTD

专注于自动化物流装备的全球化制造商

A global manufacturer focusing on automation logistics equipment

电话：0532-82499066

邮箱：realkey@126.com

官网：www.realkey.com.cn

抖音：锐尔凯自动分拣与输送设备制造商

地址：中国山东青岛市莱西姜山镇昌平路 111 号



扫一扫添加微信
获取更多信息